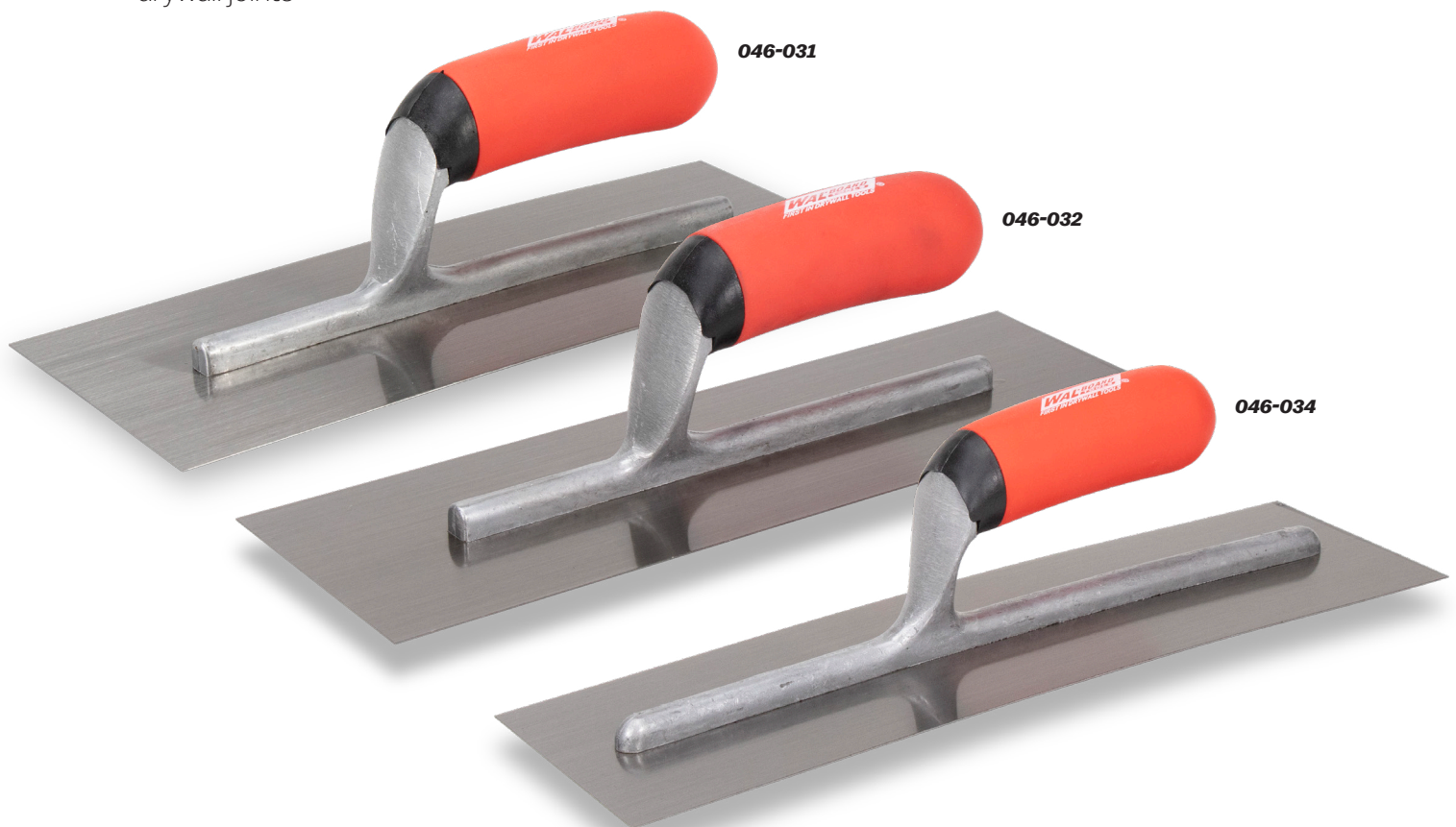


CURVED DRYWALL TROWELS

- Comes in three blade lengths: 11", 12", and 14"
- Soft grip handle is slip resistant and comfortable
- High-carbon steel blade for maximum performance
- Curved blade designed specifically to feather and taper drywall joints



| EDI | Part# | Description | Size-in. | Size-mm | Inner/Outer |
|-------|---------|-----------------------|----------|---------|-------------|
| 40180 | 046-031 | Curved Drywall Trowel | 11 | 279 | 1/6 |
| 40181 | 046-032 | Curved Drywall Trowel | 12 | 305 | 1/6 |
| 40182 | 046-034 | Curved Drywall Trowel | 14 | 356 | 1/6 |