

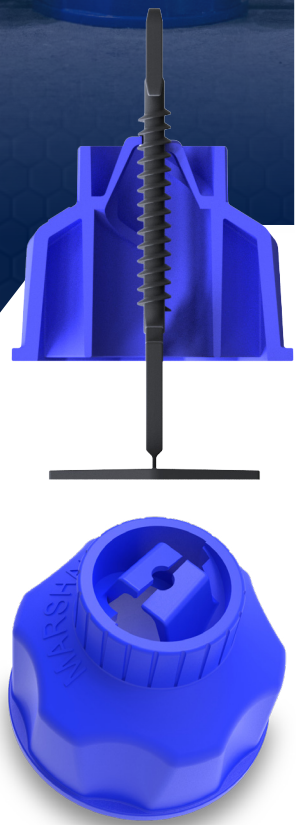
NEW & IMPROVED!

TILE LEVELING SYSTEM

FASTcap™

RATCHET CAPS

- NO tools required
- Ratchet Caps are reusable for multiple jobs
- Unique helix design allows for the quickest installation on the market
- NO spinning! Ratchet Caps are easily removed from used Spacer Bases with a quick pull
- Color-coded Spacer Bases are available in a variety of sizes (sold separately)
- Made of a more durable plastic
- Feature 6 support gussets and a thicker internal ring for increased re-usability



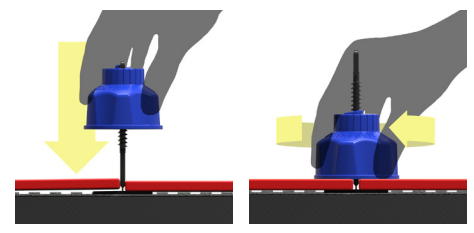
Step 1:

Place Spacer Bases (sold separately) once thinset has been applied.



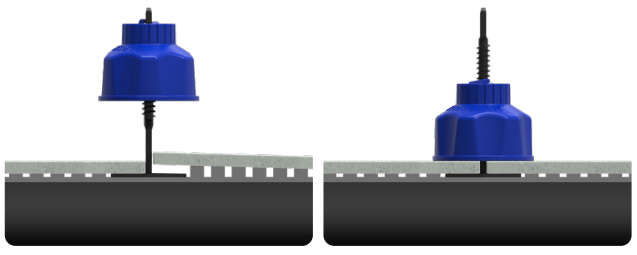
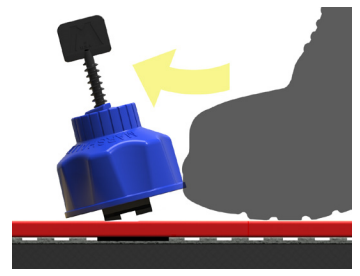
Step 2:

Push Ratchet Cap down firmly over Spacer Base. Spin to tighten.



Step 3:

When mortar has cured, kick or use rubber mallet to remove. Save the caps to reuse for your next tiling job!

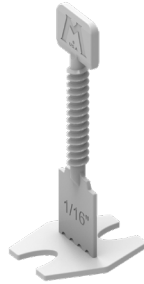


EDI	Part#	Description
29000	FASTCAP	FASTCAP Ratchet Caps, Bag of 50
29237	FASTCAPB	FASTCAP Ratchet Caps, Bag of 200
29236	FASTCAP250	FASTCAP Ratchet Caps, Bucket of 250

RATCHET CAPS

**SPACER BASE
STYLES:
(SOLD SEPARATELY)**

1/16"
(1.5mm)



Straight

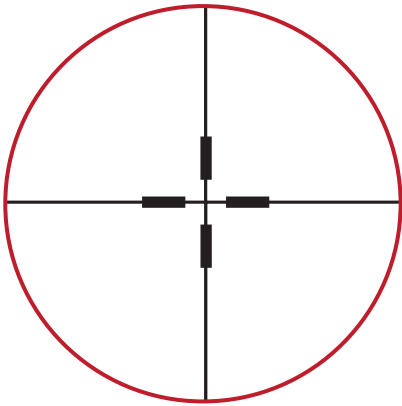
1/8"
(3mm)



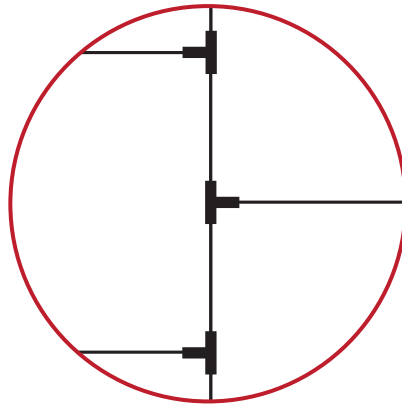
T

Straight

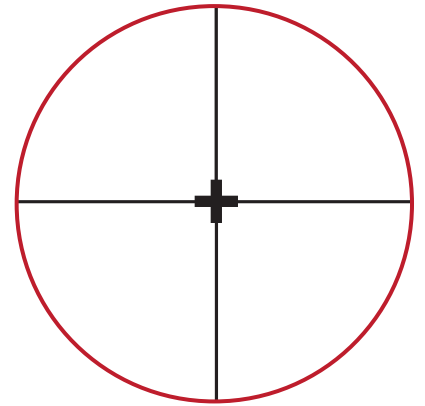
Plus (+)



Using Straight Spacer Bases



Using T Spacer Bases



Using Plus (+) Spacer Bases



Straight Spacer Bases layout



**Use 3/4 less per intersection
with T Spacer Bases!**

T Spacer Bases layout



**Use 3/4 less per intersection
with Plus (+) Spacer Bases!**

Plus (+) Spacer Bases layout