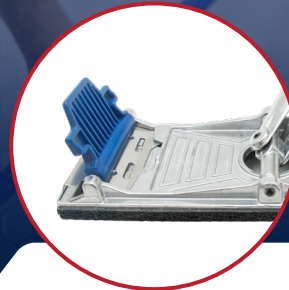


DRYWALL POLE SANDERS

- Made of reinforced die-cast aluminum bonded to a foam rubber pad
- Quick-change locking clamps
- 26B includes light-weight aluminum handle
- End of handle is threaded for use with extension handle
- Low-profile, no-flip swivel bracket
- Designed to be used with 11¼" sandpaper or sandscreen
- Used for sanding drywall joints
- 26BH includes head only with male threaded bracket
- 29BH includes head only with female threaded bracket



QUICK-CHANGE LOCKING CLAMPS



NO-FLIP SWIVEL BRACKET

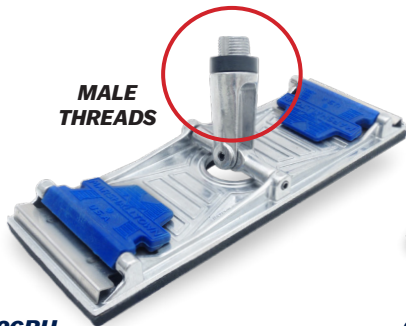


26B



48ALUM

THREADED END FOR EXTENSION



**MALE
THREADS**

26BH



**FEMALE
THREADS**

29BH

EDI	Part#	Description	Size-in	Size-mm	Inner/Outer
28615	26BH	Aluminum Sander Head - Male Threads	9 ³ / ₈ x 3 ¹ / ₄	239 x 82	6/6
28616	29BH	Aluminum Sander Head - Female Threads	9 ³ / ₈ x 3 ¹ / ₄	239 x 82	6/6
28243	26B	Aluminum Pole Sander w/Handle	9 ³ / ₈ x 3 ¹ / ₄	239 x 82	8/8
28614	48ALUM	Aluminum Pole Sander Handle	48	1219	12/12