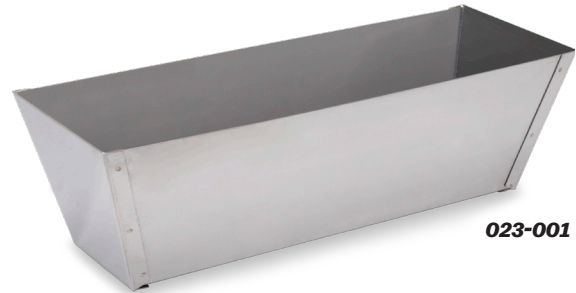


METAL AND PLASTIC MUD PANS

STAINLESS STEEL MUD PAN

- Heavy-duty, stainless steel design
- Tapered ends with mud-tight seams for easy use



GALVANIZED STEEL MUD PAN

- Heavy-duty, galvanized steel design
- Tapered ends with mud-tight seams for easy use



PLASTIC MUD PAN

- Made of polyethylene plastic
- Textured sides for easy gripping
- Tapered ends and sides for easy mud removal
- Withstands temperature change
- Includes two metal blades



EDI	Part#	Description	Width-in	Width-mm	Inner/Outer
40097	023-001	Stainless Steel Mud Pan	10	254	1/6
40098	023-002	Stainless Steel Mud Pan	12	305	1/6
40099	023-003	Stainless Steel Mud Pan	14	356	1/6
40101	023-004	Stainless Steel Mud Pan	18	457	1/6
40107	025-001	Galvanized Steel Mud Pan	10	254	1/6
40108	025-002	Galvanized Steel Mud Pan	12	305	1/6
40109	025-003	Galvanized Steel Mud Pan	14	356	1/6
40110	025-004	Galvanized Steel Mud Pan	18	457	1/6
40111	027-002	Plastic Mud Pan	12	305	1/6
40112	027-004	Plastic Mud Pan	14	356	1/6