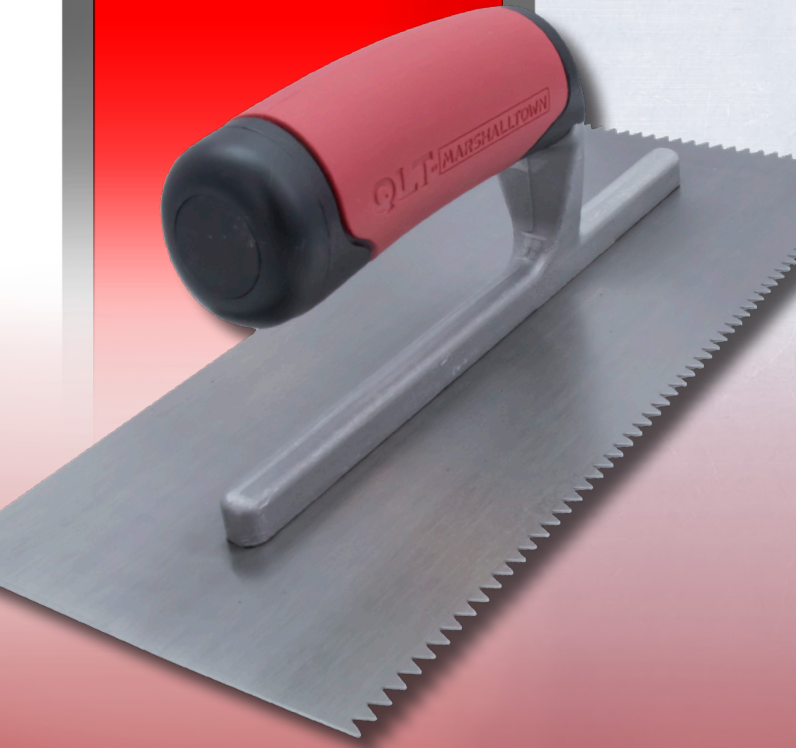
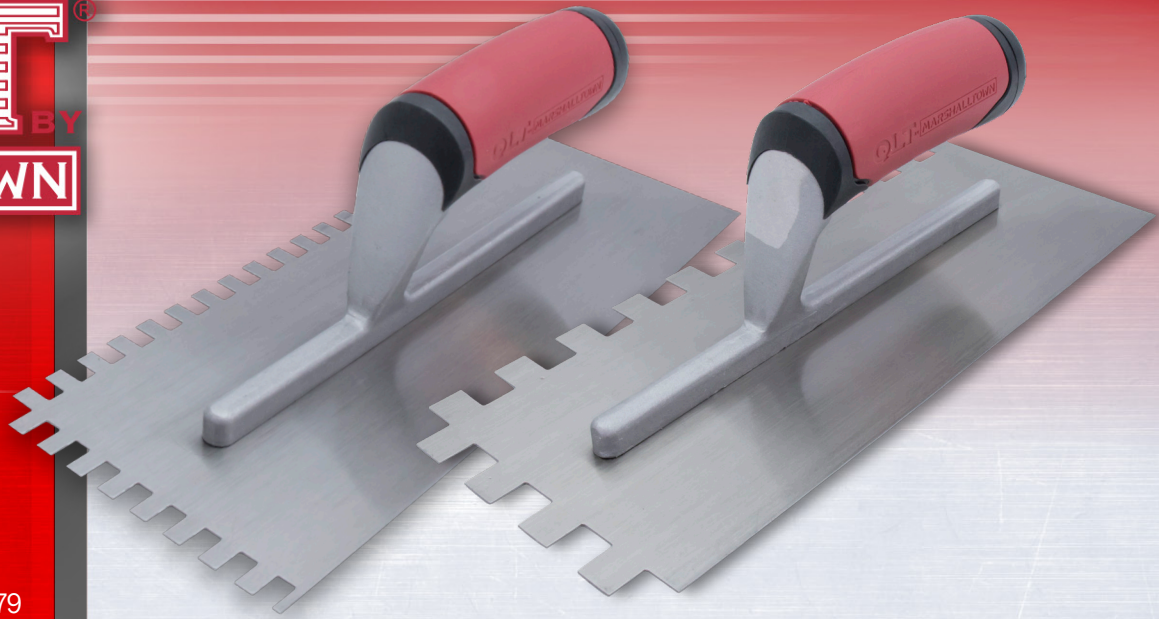




## Soft Grip Notched Trowels

- Aluminum alloy mounting riveted to a hard tempered steel blade
- Soft grip handle for extra comfort and grip
- Blade sizes are 11 x 4½" (279 X 114mm, or 16 X 4" (406 X 102mm) where noted with \*
- Sold 6 per inner pack/36 per outer pack



EDI	Part#	Notch Size-in.	Notch Size-mm	Notch
15669	NT669	1/16 X 1/16 X 1/16	1.5 X 1.5 X 1.5	SQ ■
15692	NT692*	1/16 X 1/16 X 1/16	1.5 X 1.5 X 1.5	SQ ■
15673	NT673	3/32 X 3/32 X 3/32	2.5 X 2.5 X 2.5	SQ ■
15674	NT674	3/16 X 1/8 X 3/16	4.5 X 3 X 4.5	SQ ■
15675	NT675	3/16 X 3/16 X 3/16	4.5 X 4.5 X 4.5	SQ ■
15671	NT671	1/4 X 1/4 X 1/4	6 X 6 X 6	SQ ■
15697	NT697*	1/4 X 1/4 X 1/4	6 X 6 X 6	SQ ■
15793	NT793	1/4 X 1/8 X 1/4	6 X 3 X 6	SQ ■
15672	NT672	1/4 X 3/8 X 1/4	6 X 10 X 6	SQ ■
15698	NT698*	1/4 X 3/8 X 1/4	6 X 10 X 6	SQ ■
15670	NT670	1/2 X 1/2 X 1/2	13 X 13 X 13	SQ ■
15696	NT696*	1/2 X 1/2 X 1/2	13 X 13 X 13	SQ ■
15684	NT684	1/16 X 1/32 X 1/32	1.5 X .75 X .75	U ■
15695	NT695*	1/16 X 1/32 X 1/32	1.5 X .75 X .75	U ■
15688	NT688	1/16 X 1/32 X 1/16	1.5 X .75 X 1.5	U ■
15690	NT690	1/8 X 1/8 X 1/8	3 X 3 X 3	U ■
15687	NT687	1/8 X 3/16 X 1/8	3 X 4.5 X 3	U ■
15689	NT689	1/4 X 1/4 X 1/4	6 X 6 X 6	U ■
15686	NT686	1/4 X 3/8 X 1/4	6 X 10 X 6	U ■
15685	NT685	1/4 X 1/2 X 1/4	6 X 13 X 6	U ■
15691	NT691	3/4 X 9/16 X 3/8	19 X 14 X 10	U ■
15677	NT677	3/16 X 5/32	4.5 X 4	V ▼
15679	NT679	7/32 X 5/32	5.5 X 4	V ▼
15676	NT676	1/4 X 3/16	6 X 4.5	V ▼
15699	NT699*	1/4 X 3/16	6 X 4.5	V ▼
15678	NT678	1/2 X 15/32	13 X 12	V ▼
19289	NT700	1/16 X 1/16 X 1/16	1.5 X 1.5 X 1.5	Flat V ▼
15681	NT681	3/32 X 3/32 X 3/32	2.5 X 2.5 X 2.5	Flat V ▼
15694	NT694*	3/32 X 3/32 X 3/32	2.5 X 2.5 X 2.5	Flat V ▼
15680	NT680	1/8 X 1/8 X 1/16	3 X 3 X 1.5	Flat V ▼
15693	NT693*	1/8 X 1/8 X 1/16	3 X 3 X 1.5	Flat V ▼
15683	NT683	5/16 X 1/4 X 1/16	8 X 6 X 1.5	Flat V ▼
15682	NT682	3/16 X 1/4 X 5/16	4.5 X 6 X 8	Flat V ▼