

STAINLESS STEEL NOTCHED TROWELS

Equipped with premium DuraSoft® handle that reduces user fatigue

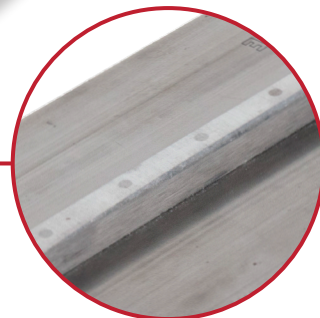
- Aluminum alloy mounting riveted to high grade stainless steel blade
- Blade size is 11 x 4½" (279 x 114mm)
- Resilient DuraSoft® handle
- Easy to clean
- Rust-resistant
- Sold 1 per inner/6 per outer pack



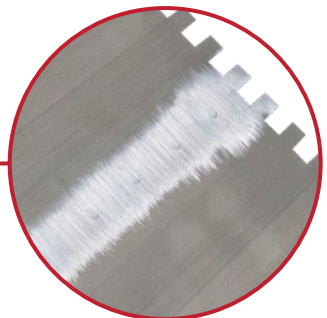
Long-lasting, durable blade made from highest grade hardened and tempered steel



Diamond shank construction prevents handle from twisting and slipping



Secured with stainless steel thru rivets for maximum hold strength between the aluminum alloy Xtralite® mounting and blade



EDI	Part#	Description	Notch Size-in	Notch Size-mm	Blade Size-in	Blade Size-mm	Inner/Outer
32767	502SSD	Stainless Steel Notched Trowel ¼" Sq - DuraSoft® Handle	¼	6	11 X 4½	279 X 114	1/6
32769	588SSD	Stainless Steel Notched Trowel ⅝" Sq - DuraSoft® Handle	⅝	8	11 X 4½	279 X 114	1/6
32768	5779SSD	Stainless Steel Notched Trowel ⅜" Sq - DuraSoft® Handle	⅜	10	11 X 4½	279 X 114	1/6